

# Bring Great Products to Wireless Industry

Cable Support Accessories and Weatherproofing



## Company Profile

Volda is a professional manufacturer and leading provider in wireless telecom network field, we specialize in manufacturing and providing a wide assortment of products that are high on value and quality and high level of service possible.

With the philosophies of adapting to our customers needs, providing quality products and services and delivering our products with the fastest turnaround time possible, we're working hard to earn your business and we'll work even harder to keep it.

From the view of continuous development, we are putting more emphasis on quality control, delivery service and after-sales support. Our goal is to work to help you maximize profits while providing the highest level of quality and service possible and to build up mutually beneficial relationship.

In the rapidly changing environments of telecommunication and electrical markets, we're always striving to be a leader in adapting to our customers ever changing needs. We love hearing your feedback, so please feel free to contact us today and send your comments.



## Product Index

---

01

### Cable Attachments

- Butterfly Hangers
- Clip Hangers
- Angle Adapters
- Standoff Adapters
- 3 Way Standoff
- Press-In Inserts
- Hose Clamps
- Clamp Heads
- Coax Support Blocks
- Coax Block Hardware
- Cable Clamps
- Rubber Grommets
- Hoisting Grips
- Cable Ties
- Stainless Steel Hardware

14

### Cable Entry

- Boot Assemblies
- Cushion Inserts
- Cushion Hanger Kits
- Cable Entry Panels

17

### Weatherproofing

- Weatherproofing Kits
- Weatherproofing Enclosures

18

### Grounding

- Grounding Kits
- Wire Lugs
- Grounding Bars

22

### Steel Products

- U-Bolt Assemblies
- Crossover Plates
- Pipe to Pipe Clamp Sets
- Waveguide Bridge Support Brackets
- Trapeze Kits
- Cluster Brackets

26

### RF Components

- Jumpers
- RF Connectors
- Adapters
- Surge Arrestors

## Butterfly Hangers

Traditional option for securing coaxial cables safely in place. Made from durable stainless steel 304. Attached with banding, hose clamps, angle adapters and standoff kits. 3/8" mounting hardware included in each bag.



Part No.	Description	Package
BH-12	Butterfly hanger for 1/2" cable	Kit of 10
BH-58	Butterfly hanger for 5/8" cable	Kit of 10
BH-78	Butterfly hanger for 7/8" cable	Kit of 10
BH-114	Butterfly hanger for 1-1/4" cable	Kit of 10
BH-158	Butterfly hanger for 1-5/8" cable	Kit of 10
BH-214	Butterfly hanger for 2-1/4" cable	Kit of 10

## Clip Hangers

Alternative design for securing coaxial cables safely in place by locking-mechanism. Attached with banding, hose clamps, angle adapters and standoff kits. 3/8" mounting hardware included in each bag.



Part No.	Description	Package
CBH-12	Clip hanger for 1/2" cable	Kit of 10
CBH-58	Clip hanger for 5/8" cable	Kit of 10
CBH-78	Clip hanger for 7/8" cable	Kit of 10
CBH-114	Clip hanger for 1-1/4" cable	Kit of 10
CBH-158	Clip hanger for 1-5/8" cable	Kit of 10
CBH-214	Clip hanger for 2-1/4" cable	Kit of 10

## Mini Angle Adapters

Durable 304 stainless steel construction. M8 mounting hardware sold separately.



Part No.	Description	Package
MAA-M6	Mini angle adapter with M6 mounting hole	Kit of 10
MAA-M8	Mini angle adapter with M8 mounting hole	Kit of 10
MAA-M10	Mini angle adapter with M10 mounting hole	Kit of 10

## Angle Adapters with 3/8" Tapped Hole

Heavy duty 304 stainless steel construction. Adapts coax hangers to angle members up to 70" thick. Featuring 3/8" tapped holes for clip-on and butterfly hangers. All angle adapters come with 3/8" set bolt.



Part No.	Description	Package
AA-38	3/8" tapped hole with set blot	Kit of 10
AA-38U	3/8" tapped hole with set bolt & hardware	Kit of 10

## Snap In Angle Adapters

Heavy duty 304 stainless steel construction. Adapts coax hangers to angle members up to 70" thick. Featuring 3/4" thru holes to accept up to two snap-in hangers. All angle adapters come with 3/8" set bolt.



Part No.	Description	Package
AA-34	3/4" thru hole with set bolt	Kit of 10
AA-34U	3/4" thru hole with set bolt, insert and hardware	Kit of 10
INT-34	Press-in insert	Kit of 10

## Snap In Angle Adapters (Slotted Type)

Heavy duty 304 stainless steel construction. Adapts coax hangers to angle members up to 70" thick. Featuring 3/4" thru holes to accept up to two snap-in hangers. Slotted to accept banding and hose clamps. All angle adapters come with 3/8" set bolt.



Part No.	Description	Package
AA-34-S	3/4" thru hole with set bolt	Kit of 10
AA-34U-S	3/4" thru hole with set bolt, insert and hardware	Kit of 10



## Standoff Adapters with 3/8" Tapped Hole

Heavy duty 304 stainless steel construction. Accepts banding and hose clamps.  
2" standoff distance.



Part No.	Description	Package
SA-38	3/8" tapped hole	Kit of 10
SA-38U	3/8" tapped hole with hardware	Kit of 10

## Standoff Adapters with 3/4" Hole for Snap-In Hangers

Heavy duty 304 stainless steel construction. Accepts banding and hose clamps.  
2" standoff distance.



Part No.	Description	Package
SA-34	3/4" thru hole	Kit of 10
SA-34U	3/4" thru hole with insert and hardware	Kit of 10
INT-34	Press-in insert	Kit of 10

## 3 Way Standoff Adapters

Durable 304 stainless steel construction. Each standoff holds up to three snap-in hangers. Accepts banding and hose clamps.



Part No.	Description	Package
SB-34	3 way standoff adapters	Kit of 10
SB-34-23	3 way standoff adapters with 2"-3" hose clamp	Kit of 10

## Press-In Inserts

Durable 304 stainless steel construction.  
Used to convert 3/4" thru hole into 3/8" threaded hole.



Part No.	Description	Package
INT-34	Press-in inserts	Kit of 10



## Stainless Steel Hose Clamps

Durable 304 stainless steel construction.



Part No.	Description	Package
RMA-12	Hose clamp 1" - 2"	Kit of 10
RMA-23	Hose clamp 2" - 3"	Kit of 10
RMA-34	Hose clamp 3" - 4"	Kit of 10
RMA-35	Hose clamp 3" - 5"	Kit of 10
RMA-56	Hose clamp 5" - 6"	Kit of 10

## Clamp Heads

Durable 304 stainless steel construction. Accepts 1/2" banding or hose clamps.  
3/8" hole for traditional mounting.



Part No.	Description	Package
CH-10	Stainless steel clamp heads	Kit of 10

## Coax Support Blocks

Durable UV resistant PP material.

Each block supports 2 cable runs and can be stacked up to 3 high.  
3/8" mounting hole.



Part No.	Description	Package
DCB-14	Coax block 1/4"	Kit of 10
DCB-38	Coax block 3/8"	Kit of 10
DCB-12	Coax block 1/2"	Kit of 10
DCB-78	Coax block 7/8"	Kit of 10
DCB-114	Coax block 1 1/4"	Kit of 10
DCB-158	Coax block 1 5/8"	Kit of 10

## Coax Block Hardware Kits

Stainless steel 304, each kit includes 3/8" threaded rod, two flat washers, two lock washers, and two hex nuts.



Part No.	Description	Package
RK-6	Threaded bar kit 6" long	Kit of 10
RK-8	Threaded bar kit 8" long	Kit of 10
RK-10	Threaded bar kit 10" long	Kit of 10
RK-12	Threaded bar kit 12" long	Kit of 10

## Cable Clamps

Durable 304 stainless steel construction and UV resistant PP material.  
A complete set includes metal parts and plastic hangers.

### Single Hole Type



Part No.	Description	Package
FCS14-1/2/3	Cable clamp for 1/4" cable, 1 run/2 run/3 run	Kit of 5
FCS38-1/2/3	Cable clamp for 3/8" cable, 1 run/2 run/3 run	Kit of 5
FCS12-1/2/3	Cable clamp for 1/2" cable, 1 run/2 run/3 run	Kit of 5
FCS12F-1/2/3	Cable clamp for 1/2" superflex cable, 1 run/2 run/3 run	Kit of 5
FCS58-1/2/3	Cable clamp for 5/8" cable, 1 run/2 run/3 run	Kit of 5
FCS78-1/2/3	Cable clamp for 7/8" cable, 1 run/2 run/3 run	Kit of 5
FCS114-1/2/3	Cable clamp for 1 1/4" cable, 1 run/2 run/3 run	Kit of 5
FCS158-1/2/3	Cable clamp for 1 5/8" cable, 1 run/2 run/3 run	Kit of 5

### Double Hole Type



Part No.	Description	Package
FCD38-2/4/6	Cable clamp for 3/8" cable, 2 run/4 run/6 run	Kit of 5
FCD12-2/4/6	Cable clamp for 1/2" cable, 2 run/4 run/6 run	Kit of 5
FCD78-2/4/6	Cable clamp for 7/8" cable, 2 run/4 run/6 run	Kit of 5
FCD114-2/4/6	Cable clamp for 1 1/4" cable, 2 run/4 run/6 run	Kit of 5
FCD158-2/4/6	Cable clamp for 1 5/8" cable, 2 run/4 run/6 run	Kit of 5

## Rubber Grommets

For use with snap-in hangers and coax blocks. Durable UV resistant EPDM rubber.



Part No.	Description	Package
HG-5MM-12	5mm - 1/2" snap ins	Kit of 10
HG-7MM-12	7mm - 1/2" snap ins	Kit of 10
HG-10MM-12	10mm - 1/2" snap ins	Kit of 10
HG-38-12	8-11mm - 1/2" snap ins	Kit of 10
HG-19MM-114	19mm - 1 1/4" snap ins	Kit of 10
HG-25MM-114	25mm - 1 1/4" snap ins	Kit of 10

## Multi-Hole Barrel Cushions

For use with snap-in hangers and coax blocks. Accepts various cables and wires.  
Durable UV resistant EPDM rubber.



Part No.	Description	Package
HG-384-114	4 x 3/8" cable - 1 1/4" snap ins	Kit of 10
HG-144384-158	4 x 1/4" cable + 4 x 3/8" cable - 1 5/8" snap ins	Kit of 10
HG-3820-158	1 x 3/8" cable + 1 x 5/8" cable - 1 5/8" snap ins	Kit of 10
HG-387-158	7 x 3/8" cable - 1 5/8" snap ins	Kit of 10

## Pre-Laced Hoisting Grips

Hoisting grips provide an effective means for hoisting coax cables and elliptical waveguide into position. Durable 304 stainless steel construction.



Part No.	Description	Package
HG-14-SE	Pre-laced hoisting grip for 1/4" cable	1
HG-38-SE	Pre-laced hoisting grip for 3/8" cable	1
HG-12-SE	Pre-laced hoisting grip for 1/2" cable	1
HG-78-SE	Pre-laced hoisting grip for 7/8" cable	1
HG-114-SE	Pre-laced hoisting grip for 1 1/4" cable	1
HG-158-SE	Pre-laced hoisting grip for 1 5/8" cable	1
HG-214-SE	Pre-laced hoisting grip for 2 1/4" cable	1

## Lace-Up Hoisting Grips

Hoisting grips provide an effective means for hoisting coax cables and elliptical waveguide into position. Durable 304 stainless steel construction.



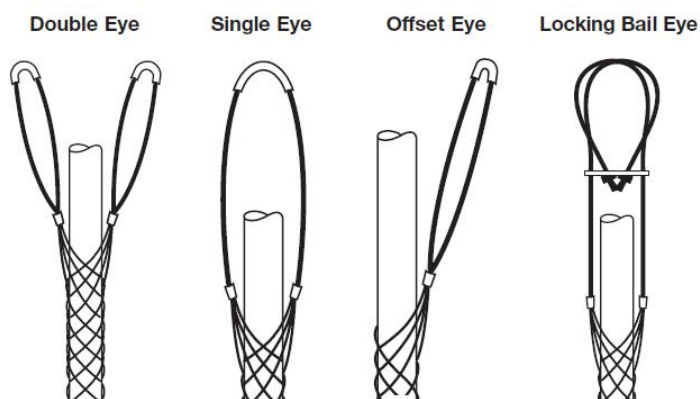
Part No.	Description	Package
HG-14-SE-L	Lace-up hoisting grip for 1/4" cable	1
HG-38-SE-L	Lace-up hoisting grip for 3/8" cable	1
HG-12-SE-L	Lace-up hoisting grip for 1/2" cable	1
HG-78-SE-L	Lace-up hoisting grip for 7/8" cable	1
HG-114-SE-L	Lace-up hoisting grip for 1 1/4" cable	1
HG-158-SE-L	Lace-up hoisting grip for 1 5/8" cable	1
HG-214-SE-L	Lace-up hoisting grip for 2 1/4" cable	1

## Tinned Bronze Hoisting Grips



Part No.	Description	Package
HGT-075-SE-L	Single eye lace up 0.75" - 0.99"	1
HGT-100-SE-L	Single eye lace up 1.00" - 1.24"	1
HGT-125-SE-L	Single eye lace up 1.25" - 1.49"	1
HGT-150-SE-L	Single eye lace up 1.50" - 1.74"	1
HGT-200-SE-L	Single eye lace up 2.00" - 2.49"	1
HGT-250-SE-L	Single eye lace up 2.50" - 2.99"	1
HGT-300-SE-L	Single eye lace up 3.00" - 3.49"	1
HGT-350-SE-L	Single eye lace up 3.50" - 3.99"	1
HGT-075-SE	Single eye closed mesh 0.75" - 0.99"	1
HGT-100-SE	Single eye closed mesh 1.00" - 1.24"	1
HGT-125-SE	Single eye closed mesh 1.25" - 1.49"	1
HGT-150-SE	Single eye closed mesh 1.50" - 1.74"	1
HGT-200-SE	Single eye closed mesh 2.00" - 2.49"	1
HGT-250-SE	Single eye closed mesh 2.50" - 2.99"	1
HGT-300-SE	Single eye closed mesh 3.00" - 3.49"	1
HGT-350-SE	Single eye closed mesh 3.50" - 3.99"	1

## Pulling Grips





## Stainless Steel Cable Ties

Durable 304 stainless steel finish.

Self-locking, ball bearing head mechanism with quick installation.

We supply both naked and black coated finish.



Part No.	Description	Package
ZT-SS-8	4.6mm x 200mm, naked SS	100
ZT-SS-8C	4.6mm x 200mm, black coated SS	100
ZT-SS-14	4.6mm x 350mm, naked SS	100
ZT-SS-14C	4.6mm x 350mm, black coated SS	100

## Nylon Cable Ties

Self-locking and UV resistant.



Part No.	Description	Package
ZT-200	4.6mmx200mm, 50lb test	100
ZT-250	4.6mmx250mm, 50lb test	100
ZT-300	4.6mmx300mm, 50lb test	100
ZT-350	4.6mmx350mm, 50lb test	100

## Stainless Steel Hardware

Durable 304 stainless steel construction.



Part No.	Description	Package
BT-38-114	3/8" x 1-1/4" hex head bolt	Kit of 100
NT-38	3/8" hex nut	Kit of 100
LW-38	3/8" lock washer	Kit of 100
FW-38-78	3/8" flat washer - 7/8" OD	Kit of 100
FW-38-58	3/8" flat washer - 5/8" OD	Kit of 100

## Press-In Insert Kits

Durable 304 stainless steel construction.

3/8" x 3/4" bolt with toothed washer.



Part No.	Description	Package
IK-34	Press-in insert kits for angle adapters	Kit of 10

## Boot Assemblies

Features a split, one-piece design for quick installation.  
Manufactured from UV resistant EPDM rubber.  
Includes two 304 stainless steel hose clamps.



Part No.	Description	Package
BA-4X	4" boot kit w/o insert	1
BA-5X	5" boot kit w/o insert	1

## Cushion Inserts

EPDM rubber design. Fits both 4" and 5" boot kits.



Part No.	Description	Package
CI-38-3	3 hole for 3/8" cable	1
CI-12-3	3 hole for 1/2" cable	1
CI-78-2	2 hole for 7/8" cable	1
CI-78-3	3 hole for 7/8" cable	1
CI-78-4	4 hole for 7/8" cable	1
CI-114-1	1 hole for 1 1/4" cable	1
CI-158-1	1 hole for 1 5/8" cable	1
CI-EW52-1	1 hole for EW52 cable	1
CI-EW52-2	2 hole for EW52 cable	1
CI-EW63-1	1 hole for EW63 cable	1
CI-EW63-2	2 hole for EW63 cable	1

## Cushion Plugs

Used to seal unused holes of cushion inserts.



Part No.	Description	Package
PLG-38	3/8" plug	Kit of 100
PLG-12	1/2" plug	Kit of 100
PLG-78	7/8" plug	Kit of 100
PLG-158	1-5/8" plug	Kit of 100

## Cushion Hanger Kits

Includes cushion insert, SS hose clamp and clamp head.



Part No.	Description	Package
CHK-38-3	3 hole for 3/8" cable	1
CHK-12-3	3 hole for 1/2" cable	1
CHK-78-2	2 hole for 7/8" cable	1
CHK-78-3	3 hole for 7/8" cable	1
CHK-78-4	4 hole for 7/8" cable	1
CHK-114-1	1 hole for 1 1/4" cable	1
CHK-158-1	1 hole for 1 5/8" cable	1
CHK-EW63-1	1 hole for EW63 cable	1
CHK-EW63-2	2 hole for EW63 cable	1
CHK-EW52-1	1 hole for EW52 cable	1
CHK-EW52-2	2 hole for EW52 cable	1

## Cable Entry Panels

Heavy duty aluminum construction with powder coat finish.

Panels have 4" openings for boots. Includes sealing caps and mounting screws.



Part No.	Description	Size	Package
CE-1X1	1 x 1 port	5" x 5"	1
CE-1X2	1 x 2 port	15.5" x 9.5"	1
CE-1X3	1 x 3 port	20" x 9.5"	1
CE-1X4	1 x 4 port	25.5" x 9.5"	1
CE-2X2	2 x 2 port	17.5" x 17.5"	1
CE-2X3	2 x 3 port	23" x 17.5"	1
CE-2X4	2 x 4 port	25.5" x 17.5"	1
CE-3X3	3 x 3 port	23" x 23"	1
CE-3X4	3 x 4 port	25.5" x 25.5"	1
CE-4X4	4 x 4 port	25.5" x 25.5"	1

## Cable Entry Sealing Caps

Used to seal unused entry ports.

PVC material.



Part No.	Description	Package
CE-CAP-4	Cap for 4" port	1
CE-CAP-5	Cap for 5" port	1

## Weatherproofing Kit

Facilitates easy installation and provide a long-term environmental sealing for connections.



Part No.	Description	Package
WPK-621	Universal weatherproofing kit	1
WPK-521	Premium weatherproofing kit	1
WPK-321	Economical weatherproofing kit	1

## Weatherproofing Enclosures

Alternative weatherproofing device to seal and protect connector joints from environment. Single use application.



Part No.	Description	Package
WS-12D	1/2" cable - antenna	1
WS-12D-S	1/2" cable - antenna, short design	1
WS12-4310	4.3-10 - antenna	1
WS-78D	7/8" cable - antenna	1
WS12-78	1/2" cable - 7/8" cable	1
WS12-158	1/2" cable - 1 5/8" cable	1



## Clip On Grounding Kits

The unique clip design and pre-formed strap allow the clip on grounding kits to slip easily over the outer conductor of cables and firmly latch into place.

Includes 60" lead, unattached lug, mounting hardware and tapes.



Part No.	Description	Package
GKC12-150-2U	1/2" grounding kit with 60" lead	1
GKC78-150-2U	7/8" grounding kit with 60" lead	1
GKC114-150-2U	1 1/4" grounding kit with 60" lead	1
GKC158-150-2U	1 5/8" grounding kit with 60" lead	1

## Bolt On Grounding Kits

Pre-formed strap allows the grounding kits to slip easily over the outer conductor of cables and firmly latch into place.



Part No.	Description	Package
GKB12-150-2U	1/2" grounding kit with 60" lead	1
GKB78-150-2U	7/8" grounding kit with 60" lead	1
GKB114-150-2U	1 1/4" grounding kit with 60" lead	1
GKB158-150-2U	1 5/8" grounding kit with 60" lead	1

## Universal Grounding Kits

Fits any size coax and elliptical waveguide, ground strap is copper or tin plating copper. Kit includes unattached 3/8" and 1/4" two hole lugs, hardware and tapes.



Part No.	Description	Package
UGK-150	Copper, 60" lead, 3/8" & 1/4" lugs	1
UGK-150-2U	Copper, 60" lead, 3/8" univ lug	1
UGKT-150	Tinned copper, 60" lead, 3/8" & 1/4" lugs	1
UGKT-150-2U	Tinned copper, 60" lead, 3/8" univ lug	1

## Self Sealing Grounding Kits

No additional need for matic tape and PVC tape.



Part No.	Description	Package
GKF14-60-M8	1/4" grounding kit, 600mm lead	1
GKF38-60-M8	3/8" grounding kit, 600mm lead	1
GKF12-60-M8	1/2" grounding kit, 600mm lead	1
GKF78-60-M8	7/8" grounding kit, 600mm lead	1
GKF114-60-M8	1 1/4" grounding kit, 600mm lead	1
GKF158-60-M8	1 5/8" grounding kit, 600mm lead	1

## One Hole Lugs With Inspection Window

Copper construction with tin plating. Long barrel.



Part No.	Wire	Hole Size	Color	Package
LG-i6-14	#6	1/4"	Blue	Kit of 10
LG-i6-38	#6	3/8"	Blue	Kit of 10
LG-i2-14	#2	1/4"	Brown	Kit of 10
LG-i2-38	#2	3/8"	Brown	Kit of 10

## Two Hole Lugs With Inspection Window

Copper construction with tin plating. Long barrel.



Part No.	Wire	Hole	Spacing	Color	Package
LG-i6-142	#6	1/4"	5/8"	Blue	Kit of 10
LG-i2-142	#2	1/4"	3/4"	Brown	Kit of 10

## Universal Two Hole Lugs With Inspection Window

Copper construction with tin plating. Long barrel.



Part No.	Wire	Hole	Spacing	Color	Package
LG-i6-38U	#6	3/8"	3/4"-1"	Blue	Kit of 10
LG-i2-38U	#2	3/8"	3/4"-1"	Brown	Kit of 10

## Tinned Copper Ground Buss Bars

Solid 1/4" thick copper buss bars. Universal hole pattern accepts two hole lugs.  
Custom patterns and hole sizes available.



Part No.	Description	Package
TGB-2600	1/4" x 2" x 6" no hardware	XX
TGB-2100	1/4" x 2" x 10" no hardware	XX
TGB-2120	1/4" x 2" x 12" no hardware	XX
TGB-4600	1/4" x 4" x 6" no hardware	XX
TGB-4120	1/4" x 4" x 12" no hardware	XX
TGB-4200	1/4" x 4" x 20" no hardware	XX
TGB-4240	1/4" x 4" x 24" no hardware	XX

## Universal Buss Bar Mounting Kits

Each kit includes (2) iron angle adapter (2) wall mounting bracket, (2) insulator and hardware.



Part No.	Description	Package
BBMK-U	Universal buss bar mounting kit	1

## Galvanized U-Bolt Assemblies

Hot dip galvanized steel. Flat washers, lock washers and nuts included.



Part No.	Description	Package
GUBK-3244	3/8" x 2-1/2" x 4"	Kit of 10
GUBK-3355	3/8" x 3-5/8" x 5-1/4"	Kit of 10
GUBK-4244	1/2" x 2-1/2" x 4"	Kit of 10
GUBK-4352	1/2" x 3" x 5-1/4"	Kit of 10
GUBK-4355	1/2" x 3-5/8" x 5"	Kit of 10
GUBK-4356	1/2" x 3-5/8" x 6"	Kit of 10

## Crossover Plate Kits

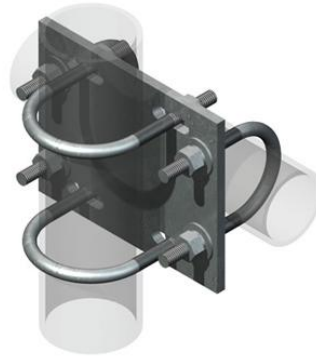
Used to attach pipes in 90°. Hot dip galvanized construction.  
U bolts and Hardware included.



Part No.	Description	Package
CPK-2020	2 3/8" - 2 3/8" OD	1
CPK-2025	2 3/8" - 2 7/8" OD	1
CPK-2030	2 3/8" - 3 1/2" OD	1
CPK-2040	2 3/8" - 4 1/2" OD	1
CPK-2525	2 7/8" - 2 7/8" OD	1
CPK-2530	2 7/8" - 3 1/2" OD	1
CPK-3030	3 1/2" - 3 1/2" OD	1
CPK-3040	3 1/2" - 4 1/2" OD	1

## Crossover Plates

Used to attach pipes in 90°. Hot dip galvanized construction.  
U bolts and hardware sold separately.



Part No.	Description	Package
CP-2020	2 3/8" - 2 3/8" OD	1
CP-2025	2 3/8" - 2 7/8" OD	1
CP-2030	2 3/8" - 3 1/2" OD	1
CP-2040	2 3/8" - 4 1/2" OD	1
CP-2525	2 7/8" - 2 7/8" OD	1
CP-2530	2 7/8" - 3 1/2" OD	1
CP-3030	3 1/2" - 3 1/2" OD	1
CP-3040	3 1/2" - 4 1/2" OD	1

## Galvanized Clamp Halves

Hot dip galvanized steel.

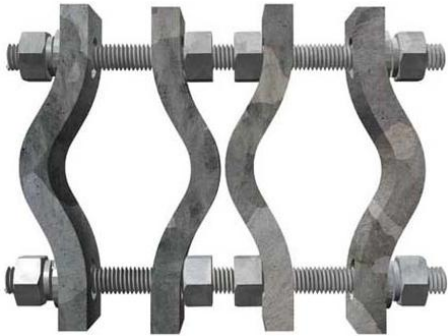


Part No.	Description	Package
V-SCP	1/2" x 1-1/2" x 5-7/8"	1
V-ACP	1/4" x 1-1/2" x 6-1/16"	1
V-DCP	1/2" x 2" x 8-3/8"	1
V-MCP	1/2" x 2" x 11-5/8"	1



## Pipe to Pipe Clamp Sets

Hot dip galvanized steel. Clamp halves and hardware included.



Part No.	Description	Package
PC-2010	1 1/2" - 3 1/2" OD, light duty	Kit of 2
PC-3010	1 1/2" - 3 1/2" OD, heavy duty	Kit of 2
PC-3514	2 3/8" - 5" OD, heavy duty	Kit of 2
PC-3518	2 3/8" - 5" OD, heavy duty, 18" rod	Kit of 2

## Waveguide Bridge Support Brackets

Galvanized steel construction.

Side-mounted design to support 12" or 24" waveguide bridge.

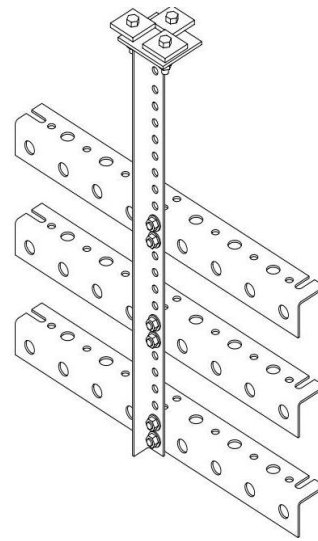
U bolts and hardware included.



Part No.	Description	Package
HH-LB12-3	12" wide for 3-1/2" OD legs	1
HH-LB24-3	24" wide for 3-1/2" OD legs	1

## Trapeze Kits

Galvanized steel construction. Triple tee and three rungs.  
Pre-punched 3/4" and 7/16" holes.



Part No.	Description	Package
TK-T12-3	Triple tee, 12" wide, three rungs	1
TK-T24-3	Triple tee, 24" wide, three rungs	1

## Cluster Brackets

Galvanized steel construction.



Part No.	Description	Package
V-SCB	Small cluster bracket	1

## Jumpers

Stable VSWR, outstanding and consistent intermodulation performance.  
Waterproof to IP67. Cable length 0.5m, 1m, 2m, 3m, 5m or customized.



Part No.	Description	Package
J12XX-DM-DM	1/2" jumper DM - DM	1
J12XX-DM-43M	1/2" jumper DM - 43M	1
J12XX-43M-43M	1/2" jumper 43M - 43M	1
J12SXX-DM-DM	1/2" superflex jumper DM - DM	1
J12SXX-DM-43M	1/2" superflex jumper DM - 43M	1
J12SXX-43M-43M	1/2" superflex jumper 43M - 43M	1

## RF Connectors

Alloy material of copper, tin and zinc to produce a highly polished, precise and strong connectors.



Part No.	Description	Package
NM-12	Connector n male for 1/2"	Box of 10
NMR-12	Connector n male for 1/2", angle type	Box of 10
NF-78	Connector n female for 7/8"	Box of 10
DM-12	Connector din male for 1/2"	Box of 10
DM-12S	Connector din male for 1/2" superflex	Box of 10
DM-78	Connector din male for 7/8"	Box of 10
DF-78	Connector din female for 7/8"	Box of 10



## YOUR ONE STOP FOR WHOLESALE WIRELESS TELECOM SUPPLIES

### Headquarters

No. 26 East Hailian Road

Lianyungang, Jiangsu 222006, China

Tel: 0086-518-81065534

Mobile: 0086-138-5128-3001

Website: [www.voldatech.com](http://www.voldatech.com)

### Clamps & Grounding Manufacturing Plant

Jiuhua Town

Nantong, Jiangsu 226541, China

Email: [manufacturing@voldatech.com](mailto:manufacturing@voldatech.com)

### Cable Assemblies & Connectors Manufacturing Plant

Dantu Industrial Zone

Zhenjiang, Jiangsu 212143, China

Email: [manufacturing@voldatech.com](mailto:manufacturing@voldatech.com)